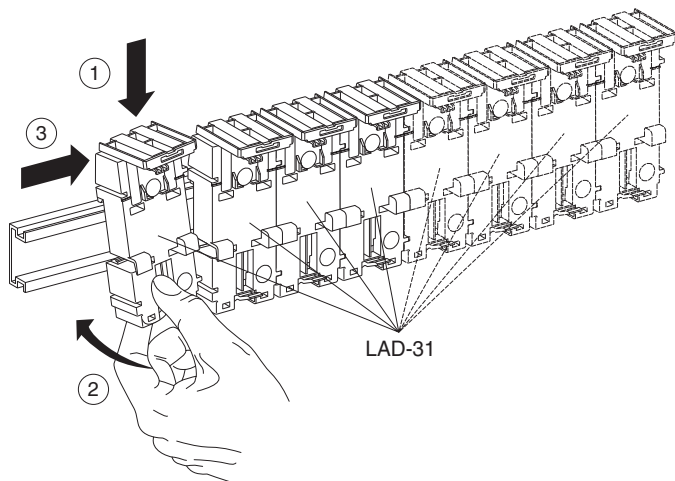
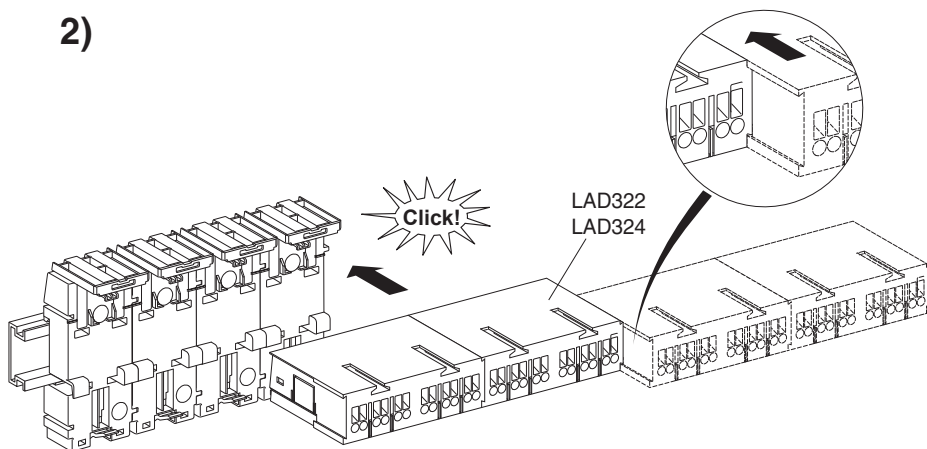


1)



2)



Schneider Electric Industries SAS  
35, rue Joseph Monier  
92506 Rueil Malmaison  
France

3)

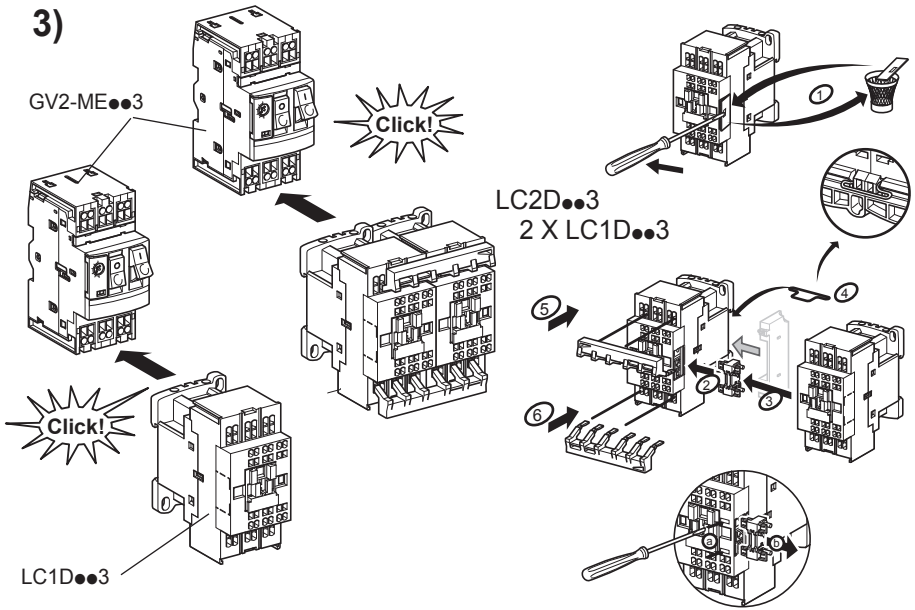
GV2-ME●●3

Click!

LC2D●●3  
2 X LC1D●●3

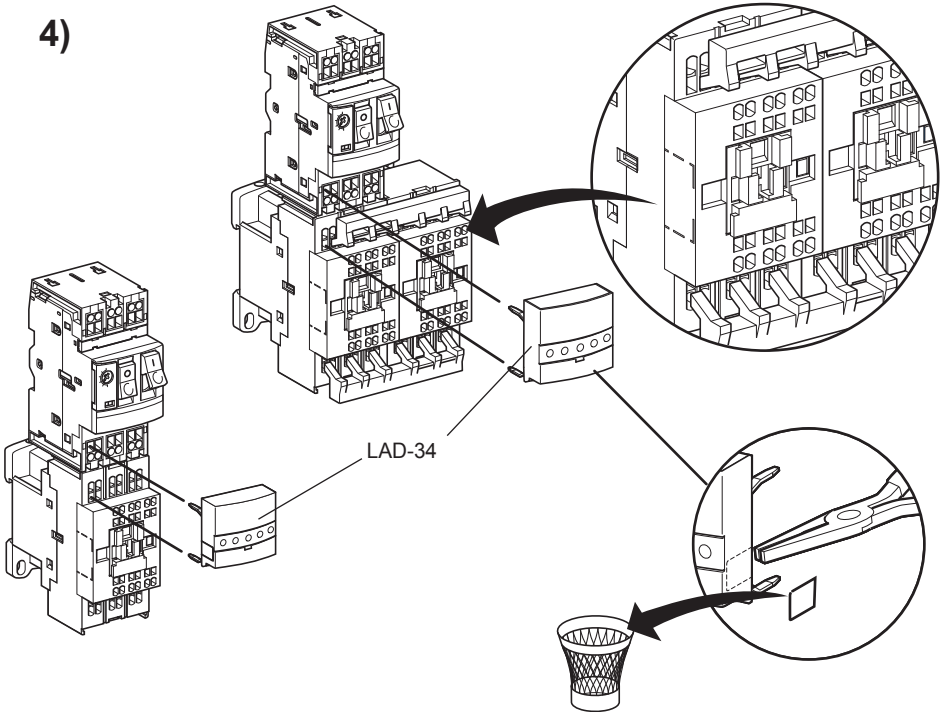
Click!

LC1D●●3

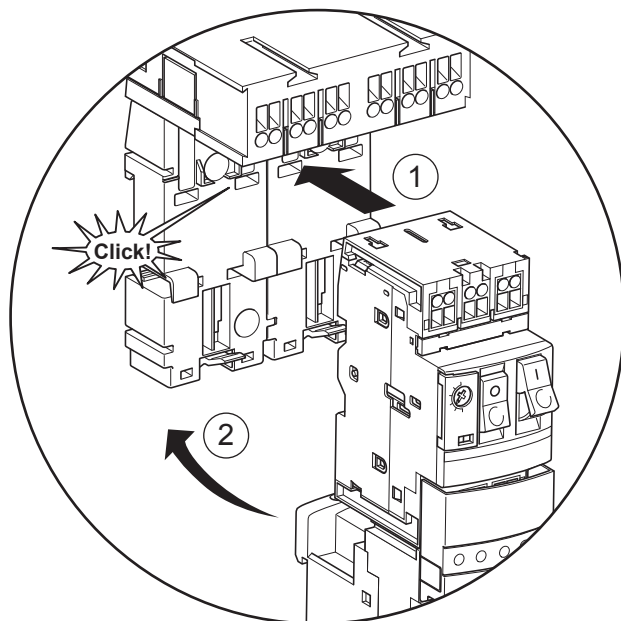
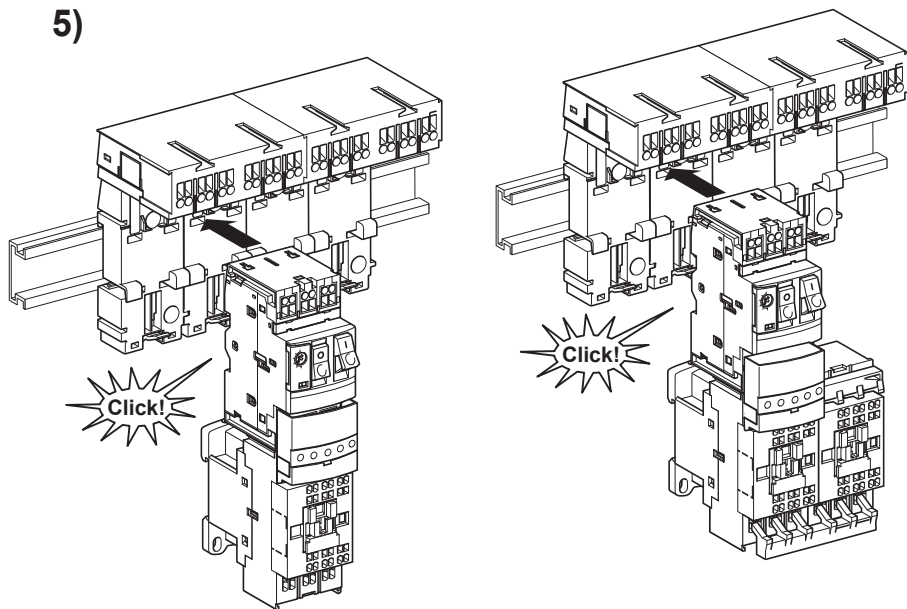


4)

LAD-34

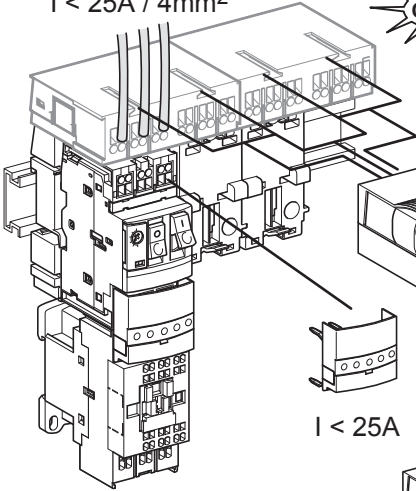


5)



6)

$I < 25A / 4mm^2$

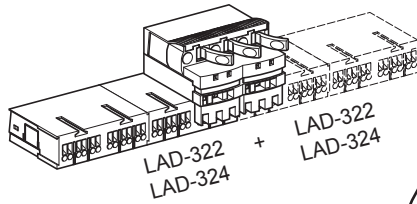
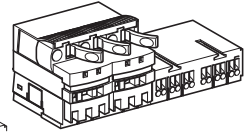
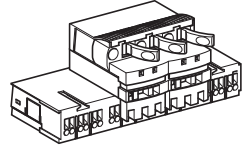
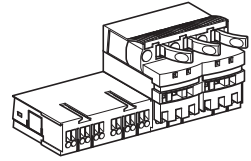


LAD-3B



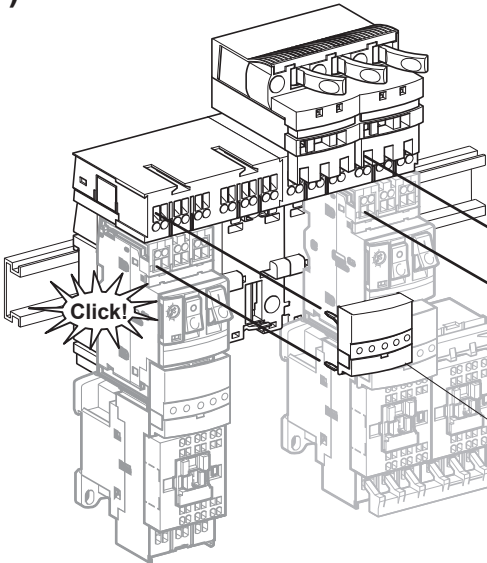
$I 60A$

$I < 25A$



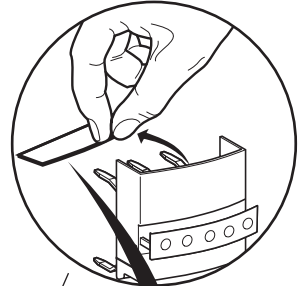
LAD-322 + LAD-324  
LAD-324

7)

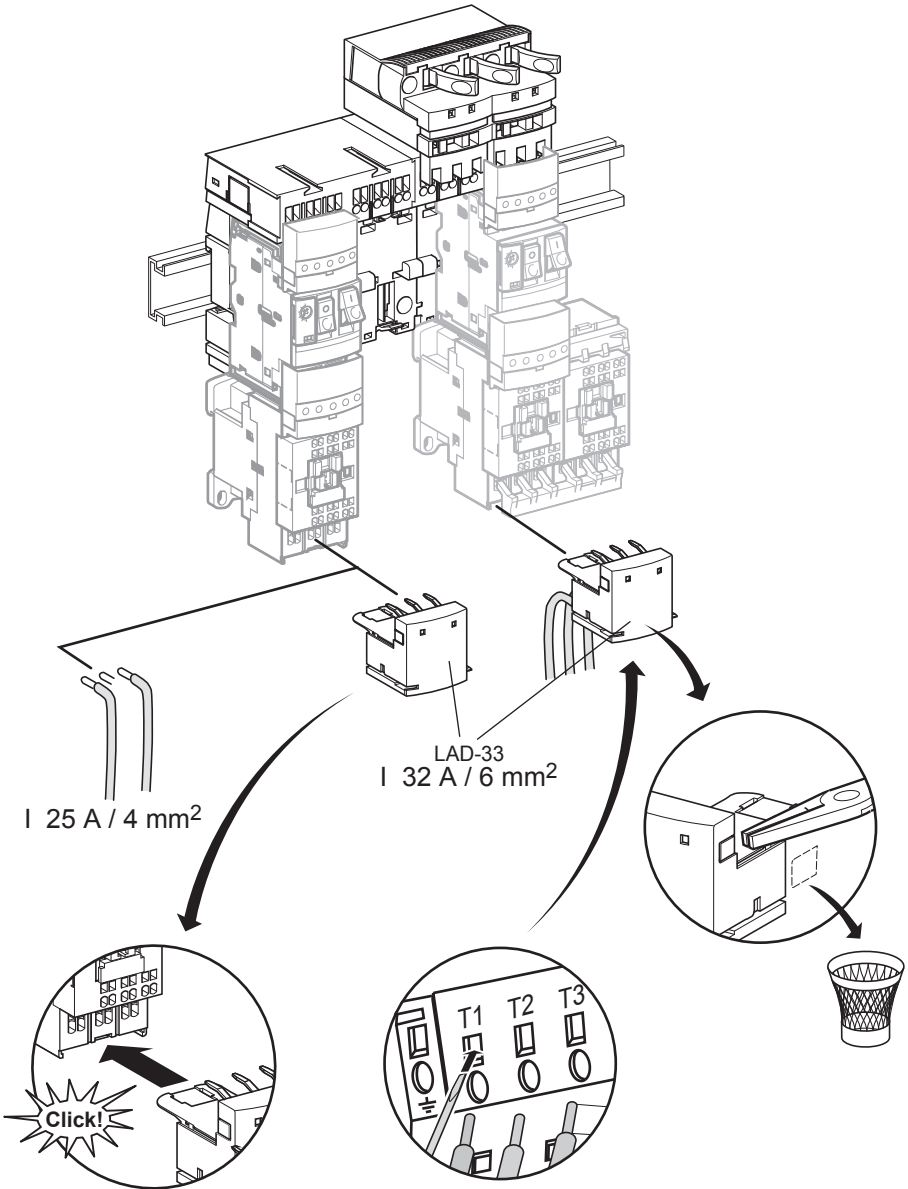


Click!

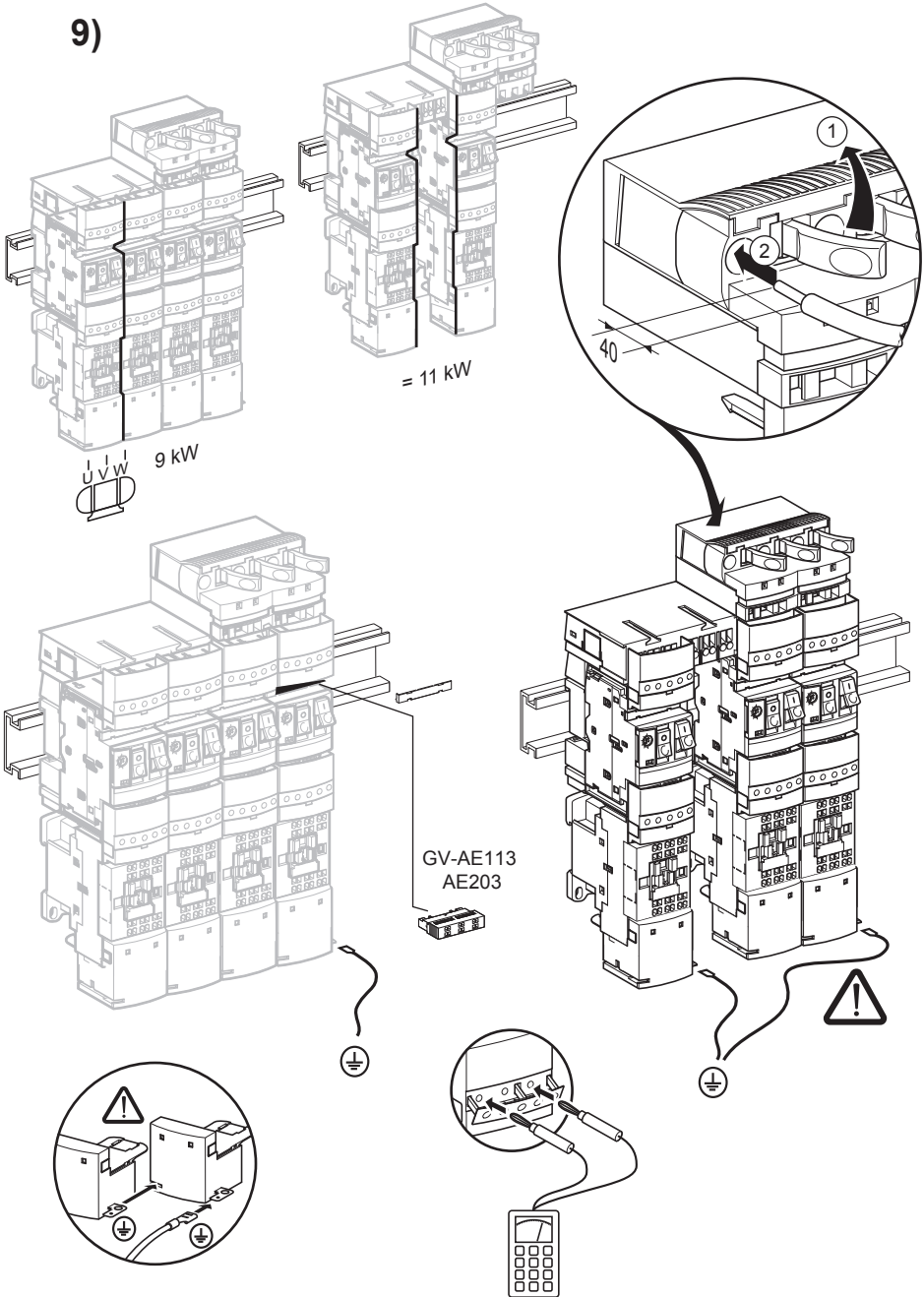
LAD-34



8)



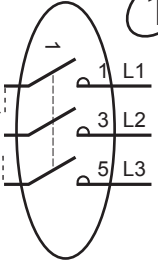
9)



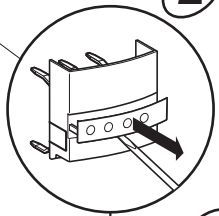
**OFF**



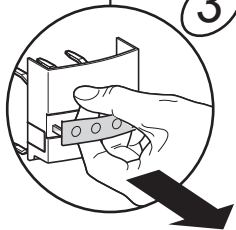
1



2



3



4



5

